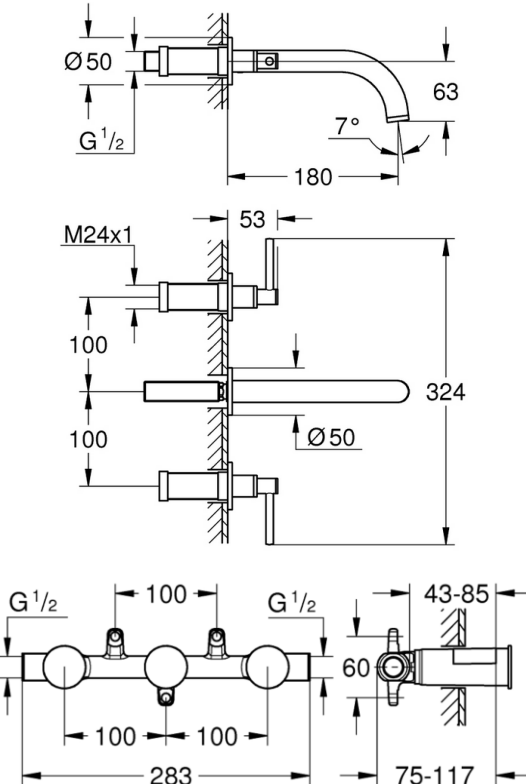

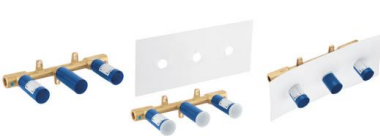




PROJECT		REF		REV	ITEM CODE	
LOCATION		DATE			PAGE	

## SANITARY WARE SPECIFICATION SHEET

Item Descriptions	GROHE (Germany) "Atrio" Chrome plated made wall mounted S-size 3-hole basin mixer 1/2" with concealed body; nominated flow rate <b>4.6 L/min</b> in WELS <b>Grade 1</b> ; Registration No. TM 21-0033		Illustration/ Drawing										
Model	20169003 (Mixer) 29025002 (concealed body)												
Finish / Material	Chrome Plated / DR-brass												
Country of origin	Germany												
Manufacturer	GROHE Limited												
Supplier	Acme Sanitary Ware Co. Ltd Mr. Eric Wong/ Mr. Don Yuen												
Contact Tel/Fax	(852) 2388-7171 / (852) 2710-8012												
E-mail	acme@acmesanitary.com.hk												
Website	www.acmesanitary.com.hk												
<p><b>"Atrio" 3-hole basin mixer</b></p> <ul style="list-style-type: none"><li>• wall mounted</li><li>• set for final installation for 29 025 002</li><li>• without concealed body</li><li>• valves hot/cold with headparts 1/2" - 90°</li><li>• <b>GROHE StarLight</b> chrome finish</li><li>• <b>GROHE EcoJoy</b> 5.7 l/min laminar mousseur</li><li>• centre distance 200 mm</li><li>• projection 180 mm</li><li>• with lever handles</li><li>• Two different sets of caps included. One set with "H" and "C" marking, one set without marking</li></ul> 		<p><b>Two-handle basin mixer concealed body, 1/2"</b></p> <ul style="list-style-type: none"><li>• for 3-hole basin mixer</li><li>• wall installation</li><li>• <b>without finishing trim set</b></li><li>• DR-brass</li><li>• installation device</li><li>• allows for waterproofing of wall construction surrounding the concealed body</li><li>• with sealing sleeve</li></ul> 											
<p><b>Colour options:</b></p> <table><tr><td>003   StarLight Chrome</td><td>GL3   Cool Sunrise</td></tr><tr><td>DC3   SuperSteel</td><td>GN3   Brushed Cool Sunrise</td></tr><tr><td>DA3   Warm Sunset</td><td>DL3   Brushed Warm Sunset</td></tr><tr><td>A03   Hard Graphite</td><td>BE3   Polished Nickel</td></tr><tr><td>AL3   Brushed Hard Graphite</td><td>EN3   Brushed Nickel</td></tr></table>				003   StarLight Chrome	GL3   Cool Sunrise	DC3   SuperSteel	GN3   Brushed Cool Sunrise	DA3   Warm Sunset	DL3   Brushed Warm Sunset	A03   Hard Graphite	BE3   Polished Nickel	AL3   Brushed Hard Graphite	EN3   Brushed Nickel
003   StarLight Chrome	GL3   Cool Sunrise												
DC3   SuperSteel	GN3   Brushed Cool Sunrise												
DA3   Warm Sunset	DL3   Brushed Warm Sunset												
A03   Hard Graphite	BE3   Polished Nickel												
AL3   Brushed Hard Graphite	EN3   Brushed Nickel												

Note: YouTube ([GROHE Atrio Product](https://www.youtube.com/watch?v=HJDtY_EFMdM)) [https://www.youtube.com/watch?v=HJDtY\\_EFMdM](https://www.youtube.com/watch?v=HJDtY_EFMdM)

YouTube ([Grohe - Atrio](https://www.youtube.com/watch?v=Xz20bzMrYEE)) <https://www.youtube.com/watch?v=Xz20bzMrYEE>

\* All information of the above is for the reference only. No prior notice is made if any changes.



# Acme Sanitary Ware Co. Ltd.

1/F, Acme Building, 22-28 Nanking Street, Kowloon, Hong Kong

Tel: 2388 7171 Fax: 2710 8012

Email: acme@acmesanitary.com.hk

Website: www.acmesanitary.com.hk

Since 1949



Pure Freude  
an Wasser

PROJECT		REF		REV	ITEM CODE	
LOCATION		DATE			PAGE	

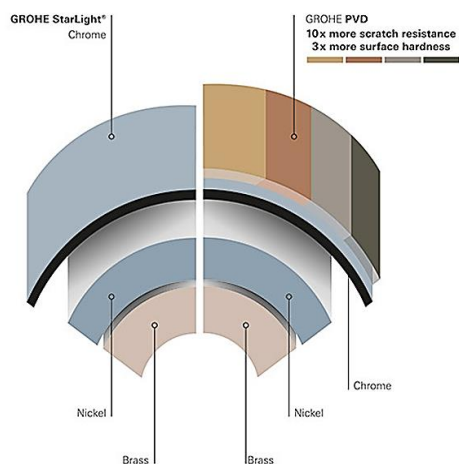
## SANITARY WARE SPECIFICATION SHEET

### GROHE ATRIO

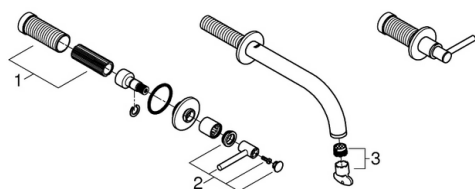
#### THE ICON OF ELEGANCE AND PRECISION

Consider the circle. A staple of natural geometry. A pure form at once soothing and dynamic. A visual metaphor for both, completeness and eternity. For its Atrio collection GROHE draws on this most elemental and elegant form to create an iconic object that is built to last.

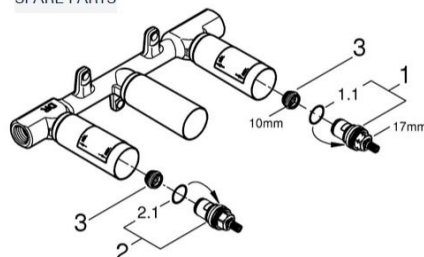
The Atrio collection means design without restrictions. Each item is available in various finishes and size options to meet all demands of personal taste and different design schemes.



#### SPARE PARTS



#### SPARE PARTS

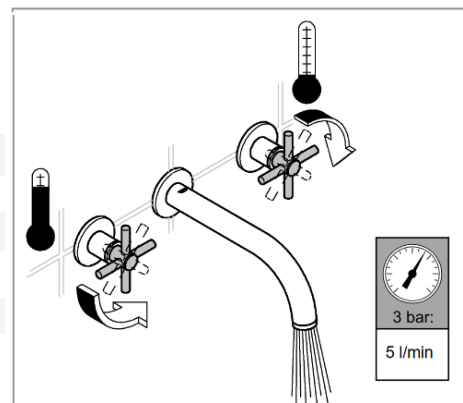


Pos.-nr.	Prod. description	Order-nr.
1	Extension for spindle	45988000
2	Lever handles	18027003
3	flow straightener	48408000

\* Optional accessories

Pos.-nr.	Prod. description	Order-nr.
1	Ceramic headpart 1/2"	45883000
1.1	O-ring Ø 18.2 x Ø 1.7	0392400M
2	Ceramic headpart 1/2"	45882000
2.1	O-ring Ø 18.2 x Ø 1.7	0392400M
3	Seat	45023000

\* Optional accessories



Note:

\* All information of the above is for the reference only. No prior notice is made if any changes.

註冊號碼 (Registration No.):

TM 21-0033



自願參與用水效益標籤計劃 - 水龍頭  
Voluntary Water Efficiency Labelling Scheme - Water Taps



茲證明  
This is to certify that

將下列水龍頭在本計劃內註冊：  
has registered the following water tap under this scheme :

牌 子 / Brand	:	Grohe
型 號 / Model	:	29025000 + 20169XX3 + 410992031
種 類 / Type	:	Mixing
原產地 / Country or Region Origin	:	Germany (Mixer & Flow Controller)

XX – denotes the code of colour

在用水效益標籤上展示的標誌

*Symbolic Presentation on the Water Efficiency Label* :



滴水點

*Water droplet(s)*

用水效益級別

*Water Efficiency Grade* :

1

耗水量

*Water Consumption* :

4.6

公升/分鐘

*litres/minute*

簽發日期：  
Date of Issue :

11 February 2021



水務署

Water Supplies Department

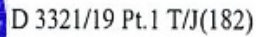


水務署署長(張業駒代行)  
for Director of Water Supplies





<sup>4</sup>8/F, Immigration Tower, 7 Gloucester Road, Wan Chai, Hong Kong



2824 0578

13 March 2019



Having considered the test report ref. J23599A issued on 19 December 2018 by Nutek Systems (HK) Ltd., this Authority accepts that the fitting described below complies with, and its use when correctly installed does not contravene, the Waterworks Ordinance and Regulations.

**Expiry Date:** 11 November 2023



This Authority hereby permits the use of the above fitting in fresh water plumbing systems subject to full adherence to Waterworks installation requirements. In particular, you are required to draw your customers' attention to the following requirement-

"The cold water supply to the fitting shall be drawn from the same source that supplies the hot water apparatus so as to provide a balanced pressure and to obviate the risk of scalding in the event of a restriction or failure in the water supply."

A condition of this acceptance is that the fitting to be installed shall be replicas of the sample as certified by the testing agent mentioned above and without modifications. This acceptance may be withdrawn at any time if the standard of the fitting installed fails to meet that of the approved sample or if the fitting is found to be unsuitable for use in fresh water plumbing systems.

This acceptance is only applicable to the main body of the fitting, unless other specified.

For the use of the fitting in any project, the General Acceptance Number of this letter must be quoted as a means of identification of acceptance of the fitting by this Authority.

Should you have any enquiries, please contact our Engineer Mr. Terry KUNG at tel. no. 3583 4086.

Yours faithfully,



(CHAN Chung-kun)

for Director of Water Supplies

Encl.

c.c.      WSD 3321/1/82    ] - without catalogue  
             ME/MC            ] - with soft copy only